

# CHRISTMAS WORDSEARCH



See if you can find all the words in this puzzle!

H	K	U	B	E	L	L	S	D	W	Y	O	Z	H
Y	A	X	I	T	Y	E	N	M	I	H	C	G	C
M	W	R	C	H	I	L	L	Y	H	R	J	Z	B
Q	R	W	V	X	F	G	O	Z	O	A	R	P	A
L	R	E	E	D	N	I	E	R	C	N	U	O	U
N	Y	W	N	Q	S	F	B	L	T	G	S	G	B
J	F	D	J	Y	M	T	R	O	F	E	G	P	L
O	F	J	D	U	O	I	E	J	B	N	Y	I	E
L	A	N	F	A	L	L	E	H	I	R	U	A	T
L	H	O	G	T	E	H	Z	K	R	T	L	B	U
Y	R	O	S	N	O	W	C	Z	L	H	E	B	M
M	A	U	F	A	E	O	V	E	S	Y	G	B	N
Y	C	R	I	S	T	Q	L	X	D	B	H	U	G
I	R	D	M	S	K	L	T	I	N	S	E	L	N

SNOW

BAUBLE

YULE

SANTA

REINDEER

GIFT

TINSEL

JOLLY

BELLS

ELF

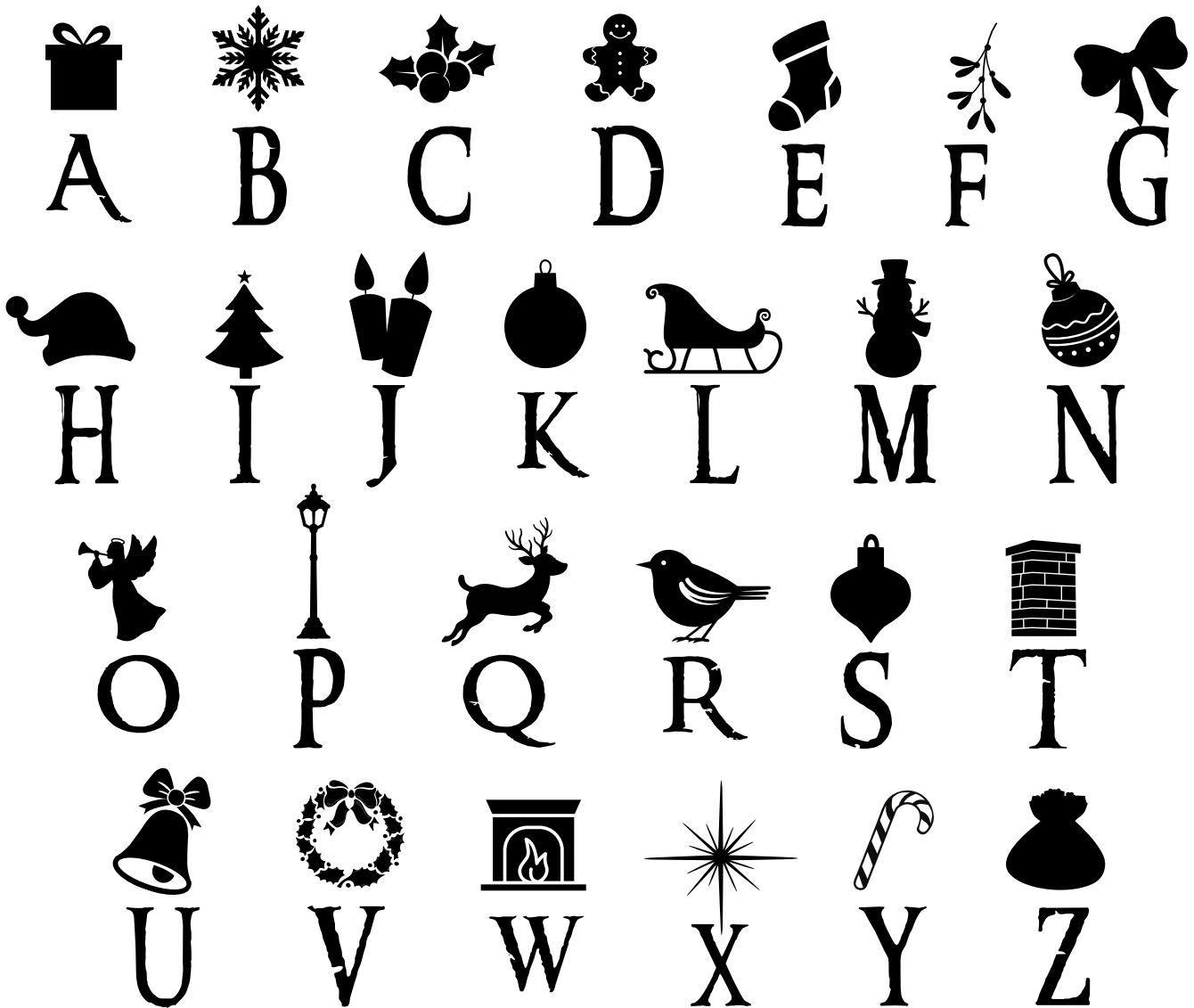
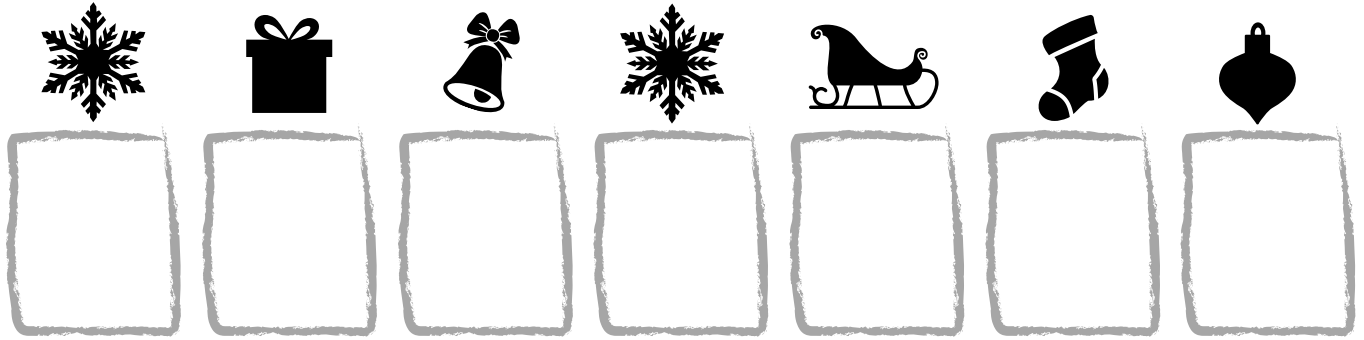
STOCKING

CHIMNEY

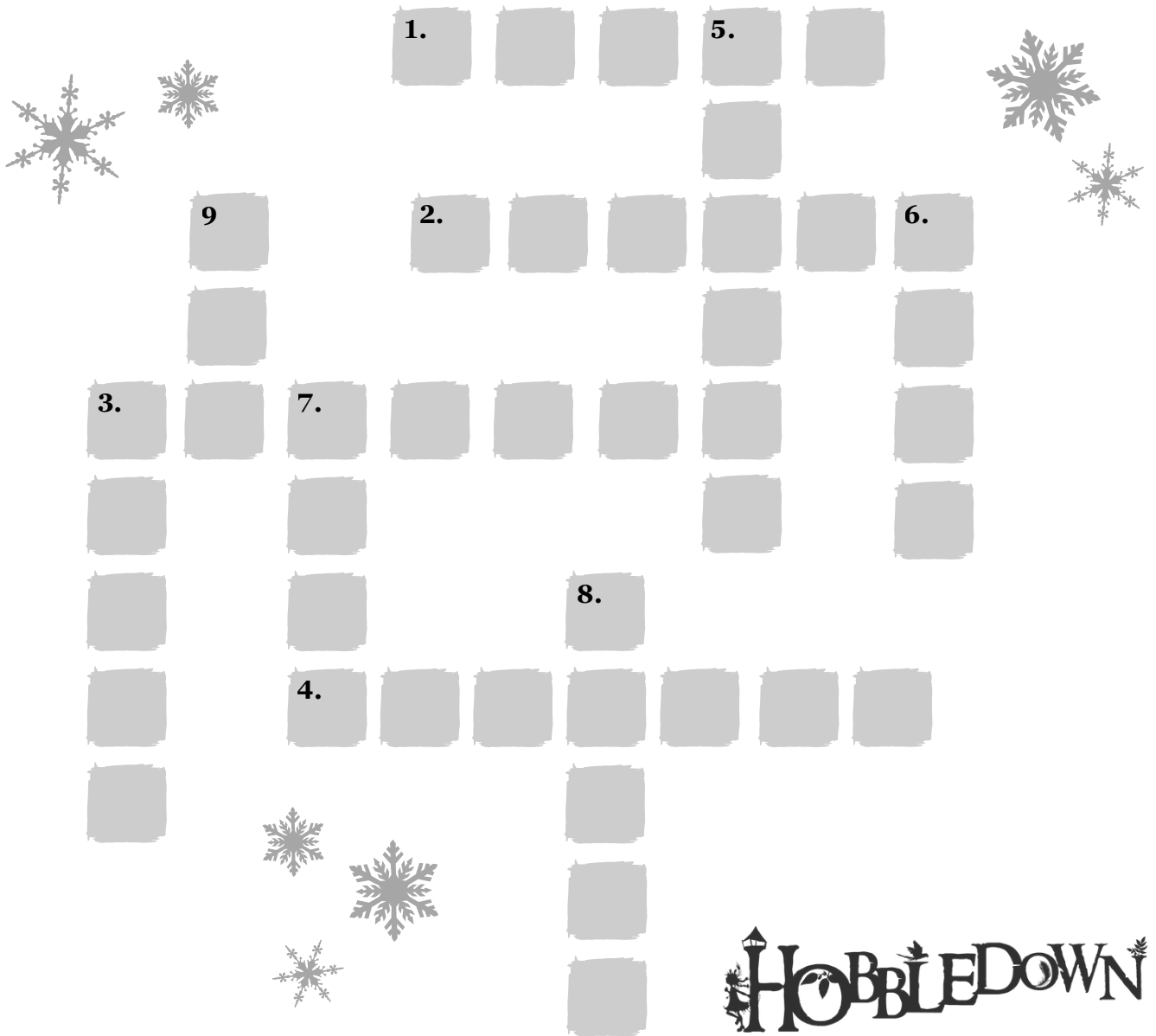


# CHRISTMAS CODE

Match the symbols to the letters below to de-code  
the secret word!



# CHRISTMAS CROSSWORD



## Across

1. Santa lives in the \_\_\_\_\_ Pole (5 letters)
2. Get into the Christmas \_\_\_\_\_! (6 letters)
3. It's the \_\_\_\_\_ season (7 letters)
4. Santa's reindeer with the shiny nose (7 letters)

## Down

3. Eat up - it's a delicious Christmas \_\_\_\_\_! (5 letters)
5. The best part of Christmas dinner is the roast \_\_\_\_\_ (6 letters)
6. Hang the baubles on the \_\_\_\_\_ (4 letters)
7. Look for the brightest \_\_\_\_\_ in the sky! (4 letters)
8. Deck the halls with boughs of \_\_\_\_\_ (5 letters)
9. The day before Christmas is called Christmas \_\_\_\_ (3 letters)

# CHRISTMAS COLOURING



# CHRISTMAS COLOURING



# CHRISTMAS COLOURING

